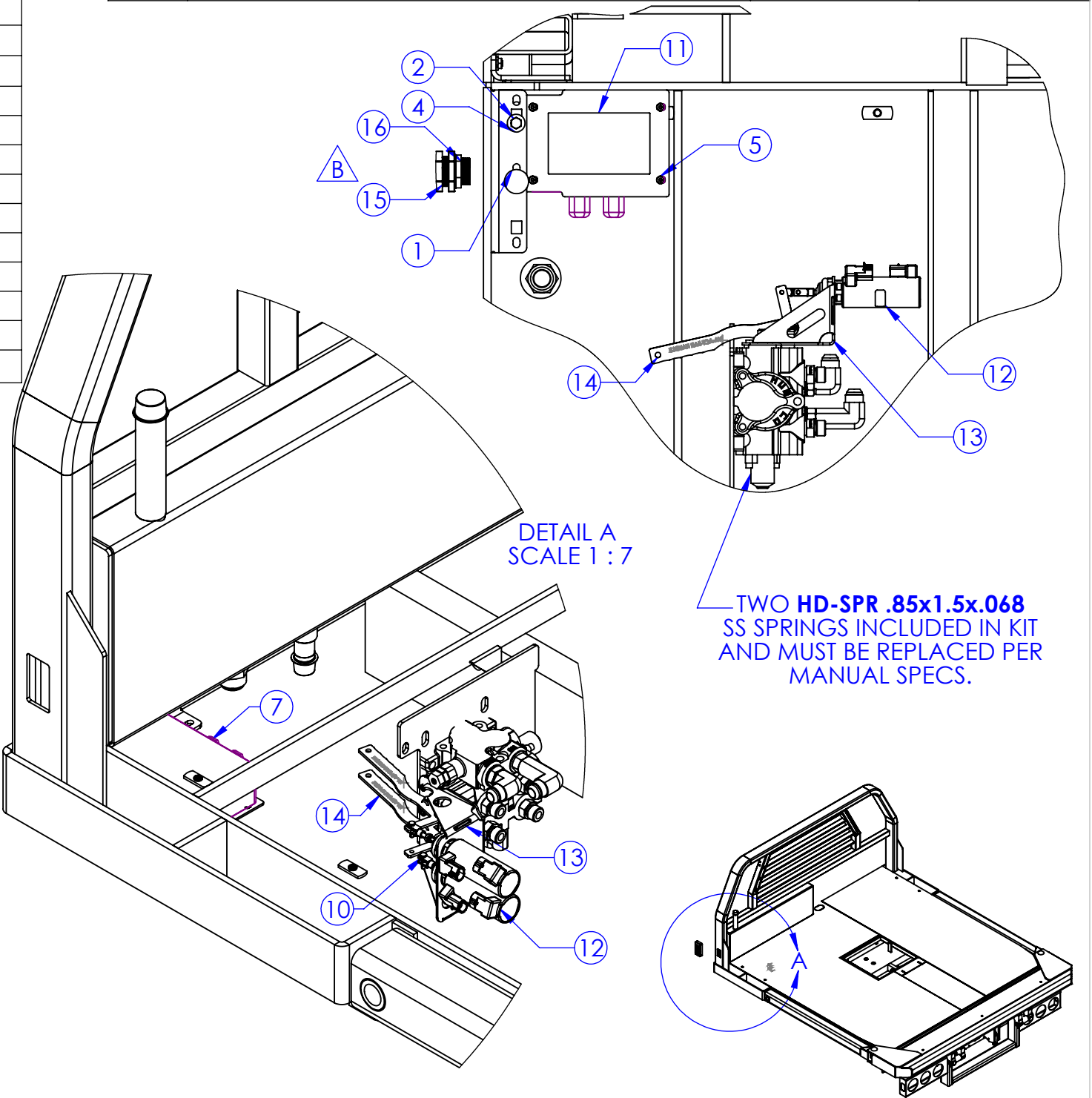
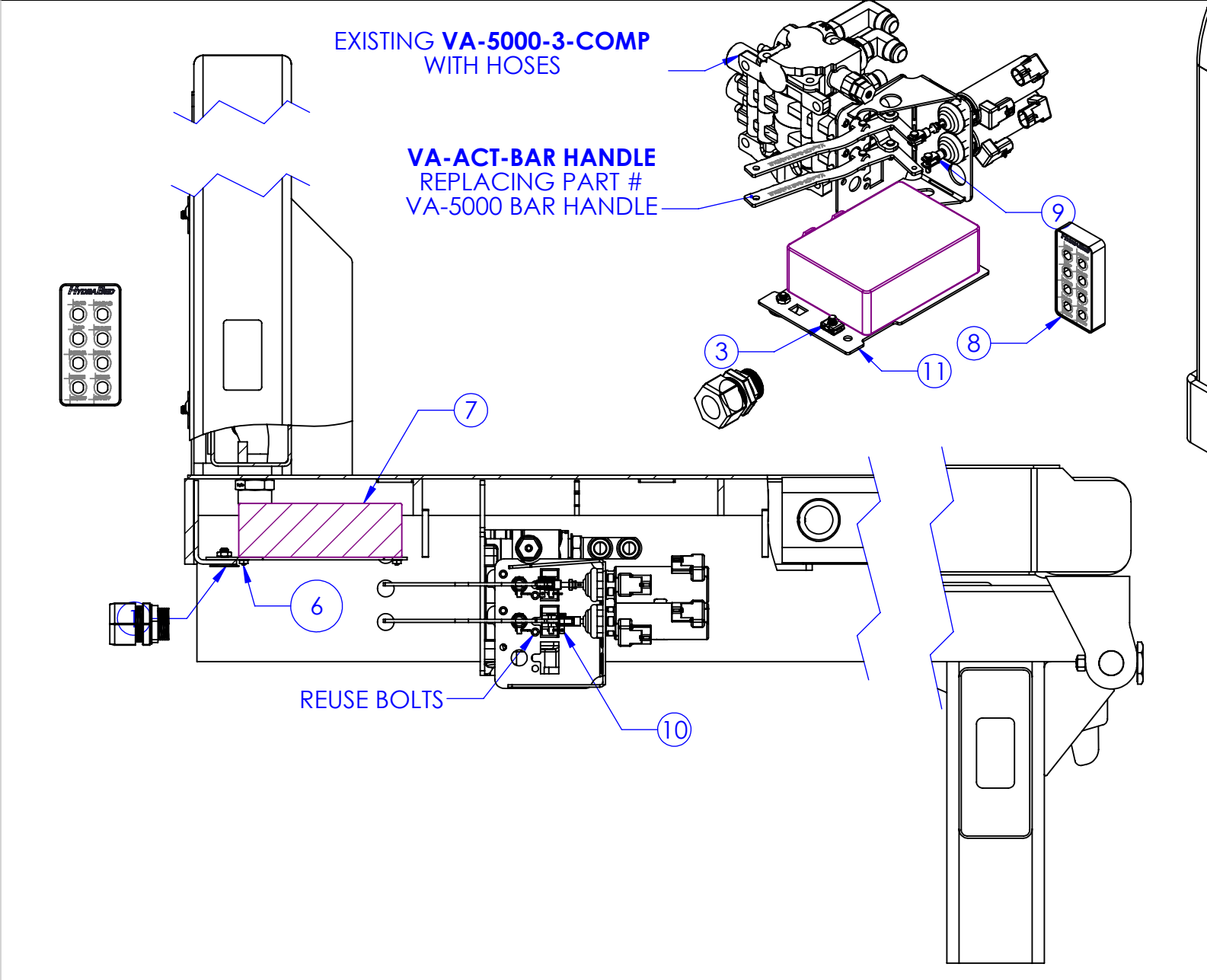


ITEM NO.	PART NUMBER	DESCRIPTION	DRAWING #	QTY.
1	BO-5/16x3/4 ELEV CS	ELEVATOR SQUARE NECK CAP SCREW 5/16x3/4	STOCK	1
2	hex bolt_ai	BOLT 5/16 x 1-1/2	STOCK	1
3	BO-5/16 CLIP IN NUT	CLIP-ON NUT 5/16"	STOCK	1
4	BO-5/16 FW	5/16" FLAT WASHER	STOCK	1
5	BO-8-32x3/8 MS	8-32 STAINLESS STEEL MACHINE SCREW NUT W/ TOOTH WASHER	STOCK	4
6	BO-8-32 HN SS TW	8-32 STAINLESS STEEL SOCKET HEAD CAP SCREW	STOCK	4
7	EL-RFR12V-8TC	RT RECIEVER, 8 FUNCTION	STOCK	1
8	EL-RFT340-8TC	RF TRANSMITTER, 8 FUNCTION	STOCK	1
9	HD-PC 10-32 x BTC-18	CLEVIS, 10-32 THREADS, BTC-187S	STOCK	2
10	HD-PC 3/16x3/4 SS	CLEVIS PIN 3/16x3/4	STOCK	2
11	FP-ACT-RFR MP	MOUNTING PLATE FOR A RF RECIEVER, 8 FUNCTION	11-2901	1
12	VA-ACT	AUCTUATOR DUAL ACTING SOLENOID VALVE 50DEGREE	10-2900	2
13	VA-ACT-M PLATE	AUCTUATOR DUAL ACTING SOLENOID MOUNTING PLATE	10-2902	1
14	VA-5000-2-COMP for OP-KS2SP	3 SPOOL VALVE ASSY		1
15	EL-CORD CONNECTOR 100	1" ELECTRICAL CORD CONNECTOR	PURCHASED	1
16	EL-LOCKNUT 100	LOCKNUT, PLASTIC 1" ELCTR	PURCHASED	1

REVISIONS			
REV.	DESCRIPTION	DATE	APPROVED
A	INITIAL RELEASE	12/26/2013	
B	ADDED EL-CORD CONNECTOR AND EL-LOCKNUT	3/11/2016	



PROPRIETARY AND CONFIDENTIAL
THE INFORMATION CONTAINED IN THIS DRAWING IS THE SOLE PROPERTY OF <INSERT COMPANY NAME HERE>. ANY REPRODUCTION IN PART OR AS A WHOLE WITHOUT THE WRITTEN PERMISSION OF <INSERT COMPANY NAME HERE> IS PROHIBITED.

UNLESS OTHERWISE SPECIFIED:
DIMENSIONS ARE IN INCHES
TOLERANCES:
FRACTIONAL $\pm 1/16$
ANGULAR: MACH ± 1 BEND \pm
TWO PLACE DECIMAL ± 0.010
THREE PLACE DECIMAL ± 0.005
MATERIAL
DO NOT SCALE DRAWING

	NAME	DATE	P.O. BOX 248, SABETHA KS. 66534 (785) 284-3674 FAX (785) 284-3931		
DRAWN	CAITLYN	3/11/2016	<div><i>TRIPLE</i> <small>INC.</small> <i>C</i></div>		
PART #					
ASM #	OP-KS2SP				
COMMENTS:			SIZE DWG. NO. REV		
KIT, SOLENOID ACTUATOR 2 SPOOL			B 10-0974-02 B		B
			SCALE: 1:20		WEIGHT: SHEET 1 OF 1